



**Kiran
Foundation**

2024 - 2025

ANNUAL BOOK

ایک شفقت بھرے معاشرے کا تصور

19 Years of Building Safe & Happy Spaces



I WANT
TO MAKE
A DIFFERENCE!



CONTENTS

1. LEADERSHIP & GOVERNANCE

• Vision, Mission & Values -----	5
• Our Lens: Mental Health & Wellbeing -----	6
• Founder & Chairperson's Note -----	8
• Vice Chairperson's Message -----	10
• General Secretary's Message -----	12
• Finance Secretary's Message -----	14
• Brand Ambassador's Note -----	16
• Chief of Patron's Note -----	18
• COO's Message -----	20
• Board of Directors (Pakistan) -----	21
• Board of Directors (USA – 501(c)) -----	22
• Chairman-KF-USA & Treasurer's Message -----	24
• General Body Members -----	26
• Anchoring Team & Department Leads -----	27
• About Kiran Foundation -----	30
• Trauma Informed School System's Co-Founder's Note -----	31

2. EDUCATION × MENTAL HEALTH & WELLBEING

• Mental Health & Wellbeing Lead's Message -----	35
• MHW Department's Overview -----	34

3. EDUCATION

• Head of Education's Message -----	38
• Safe & Happy Schools	
• Kiran Foundation DCTO Campus (Lyari) -----	40
◦ Nafeesa Forum -----	42
• Kiran School Kati Pahari Campus -----	44
• Kiran School Alamabad (Swabi) -----	46
• Kiran School Barjungle -----	48
• Kiran Satellite Model -----	50
• Kiran Flagship Ambassador Program -----	52
• Uraan College & University Support Program -----	54
• A Glimpse of our Success Stories -----	59
• Training & Development -----	67
◦ Building Safe & Happy Spaces -----	67
◦ Capacity Building Trainings for Staff Members -----	68

4. EMPOWERMENT & ENRICHMENT

- Empower & Enrichment's Head's Message ----- 69
- Hadia Clubs - Beyond the School ----- 70
- Roshni Program ----- 73
- Sulah Se Salamti (Peace-Building Initiative) ----- 75

5. OUTREACH

- Shafqat Bhari Shaam ----- 78
- Shafqat Bhari Shaam Gallery ----- 79

6. WELFARE

- Welfare - Balochistan ----- 82
- Welfare - Gilgit Baltistan ----- 83

7. ACKNOWLEDGEMENTS

- Partnerships ----- 86
- MoU ----- 87



Vision

Envisioning a compassionate society

ایک شفقت بھرے معاشرے کا تصور

Mission

- To restore society's faith in love and peace by strengthening the relationships within families and their communities through providing holistic education for all.
- To bridge the socio-economic gap in our society through providing equal opportunities of Education, Empowerment and Engagement for all.
- To strengthen the belief in the power of motherhood to be the most effective and impactful source of character building of a nation by working deeply with the mothers/caregivers.
- To raise awareness and understanding of mental health and emotional wellbeing, character building and humanitarian values.



Our Lens

Mental Health

Our Functions

Our functions operate through the understanding of emotional wellbeing and positive mental health.

Education, Empowerment, Engagement

Our Values

Our values are inspired by the **CORE** of motherhood

Courage; **O**wnership;
Resilience; **E**mpathy

“My ultimate aim is to restore society’s belief on love”

میں محبت پر ایمان بحال کرنا چاہتی ہوں -

Sabina Khatri

Sitara-i-Imtiaz Recipient





FOUNDER & CHAIRPERSON
Sabina Khatri

FOUNDER'S NOTE

Sabina Khatri

“ This year has truly been one of delegation and systemisation, marked by the remarkable growth of our team and the emergence of new leaders who have confidently taken on wider responsibilities. Their strength has allowed the Foundation to explore expansion, pursue new ideas, and deepen its presence across Pakistan. It has also underscored an urgent need for evolution within the schooling system, one our team is fully prepared to embrace with energy and vision.

Our Board has been significantly more engaged, and our financial and administrative structures have moved toward greater accuracy, systemisation, and long-term stability. For me personally, this year became a transition into fully serving as Chairperson, observing from a broader vantage point, strengthening governance, while taking the time to reflect on my own wellbeing and health

Above all, I close this year with profound gratitude for the exceptional team that carries the Foundation's mission forward with dedication, competence, and heart. ”



VICE CHAIRPERSON
Sanna Tahir



VICE CHAIRPERSON'S NOTE

Sanna Tahir

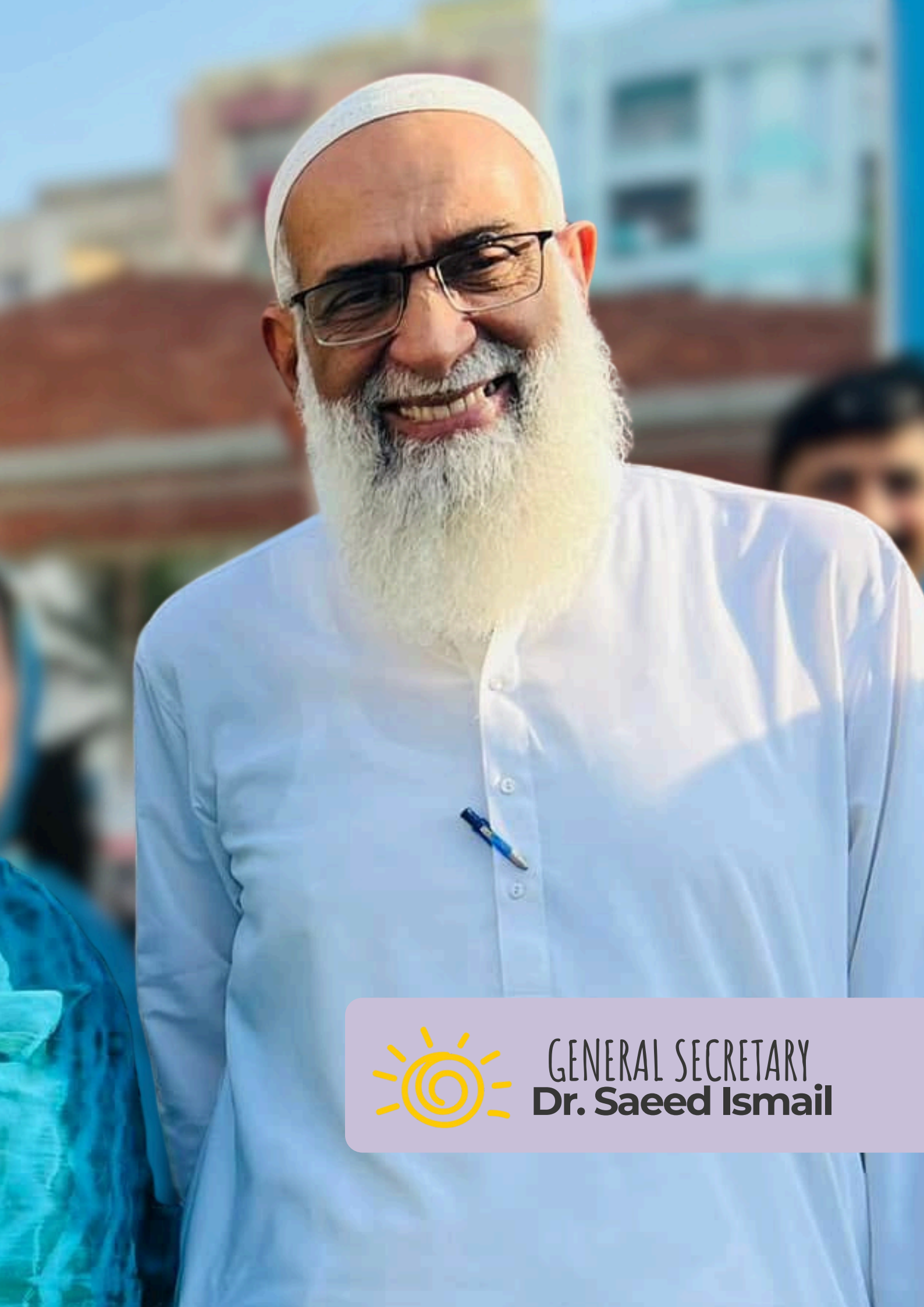
“ This year has been one of meaningful progress, learning, and renewed purpose for Kiran Foundation. Guided by our commitment to trauma-informed education, family-centered support, and community empowerment, we have seen transformation flourish when compassion meets consistency.

Being part of Kiran Foundation has shown me that real change begins in quiet moments—when a child feels safe to dream, a mother finds her voice, and a community chooses hope over fear. Across our schools and programs, children have thrived academically and emotionally, mothers have stepped into leadership roles, and families have strengthened their support systems.

The Uraan Programme exemplifies this progress, with 232 ambassadors, 99 new students, and outstanding academic achievements, including top university admissions and 10 AKUEB High Achievers scoring 85–90.4%.

As Vice Chairperson, I am proud of our team's integrity, professionalism, and heart, which ensure our holistic, community-centered model continues to grow. Looking ahead, we remain committed to expanding education access, mental health support, family engagement, and sustainable community development.

Thank you to our donors, partners, volunteers, and Lyari families for your trust and belief. Together, we continue to create pathways of hope and generational change. ”



GENERAL SECRETARY
Dr. Saeed Ismail

GENERAL SECRETARY'S NOTE

Dr. Saeed Ismail

“ We are thankful to Allah for the blessings bestowed upon Kiran Foundation and for giving us the opportunity to serve the downtrodden by spreading hope and happiness.

Our special thanks to our staff and management who worked their hearts out to make Kiran Foundation a beacon of light for our mothers and students to make them responsible citizens and to make future leaders who would bring about a positive change in the society. ”



FINANCE SECRETARY
Syed Ghazanfar Agha

FINANCE SECRETARY'S NOTE

Syed Ghazanfar Agha

“ It has been a challenging year for Pakistan, and the need/contribution of organisations like KF has grown sharply. It has been wonderful to see the Kiran children and mothers grow and flourish in this environment, with KSKP coming fully online. Financial consolidation and discipline was the key theme this year, with the management supporting the finance team fully. With donor support, expenses streamlined, and efficiencies created in utilisation, KF has been able to reach further than ever before. Whether it is creating quality education, empowering mothers, including fathers into societal development providing shelter and flood relief, sportingly developing our next gen, it has been a hectic and busy year.

We express gratitude for the continuous support from our donors, team and beneficiaries, and we pray that Allah has mercy on our beautiful Pakistan and our fellow men, saving us from calamities and its enemies, both internal and external.

Let's build an honest and compassionate society, and a Pakistan we all aspire to.

God bless and Pakistan Zindabad ”



BRAND AMBASSADOR
SANIA SAEED

BRAND AMBASSADOR'S NOTE

Sania Saeed

“ This is a place built first on safety. Not the kind that comes from rules alone, but the kind that grows when people are seen, heard, and believed. A place that understands that every child arrives carrying invisible histories, some tender, some heavy, and that learning cannot begin until the heart feels held. Here, safety is not a privilege; it is the ground we stand on.

This is a place that understands trauma without naming it loudly. It listens before it corrects. It pauses before it pushes. It knows that fear is not defiance, silence is not weakness, and mistakes are not failures but signals asking for care. Compassion is not an afterthought here; it is a daily practice, woven into classrooms, corridors, and conversations.

In this place, we relearn how to love. Love for learning, love for self, love for one another. And slowly, gently, we unlearn fear, the fear of being wrong, of being different, of not being enough. We learn that growth does not require harm, that discipline can coexist with dignity, and that strength is born where kindness is consistent.

This is not just a school.

It is a space where healing and education walk side by side.

Where courage is nurtured quietly.

Where hearts are kept as carefully as minds.

This place is home.

This place is Kiran. ”



I Want to
Make a
Difference!



CHIEF OF PATRONS
Danish Aman

CHIEF OF PATRONS'S NOTE

Danish Aman

“Kiran Foundation is doing truly life-changing work. By educating the most deserving children of Lyari, they are not only shaping young minds but transforming entire families.

What makes their mission even more powerful is their commitment to educating mothers as well—because when a mother is educated, a whole generation rises. This compassionate and visionary approach is rare, deeply impactful, and exactly what this community needs.”



CHIEF OPERATING OFFICER
Zohra Omar

COO'S MESSAGE

Zohra Omar

“This year reaffirmed that meaningful transformation at Kiran Foundation unfolds through quiet, consistent, value-led work in everyday acts of care, courage, and presence. I am deeply grateful for what our teams, children, mothers, and communities have achieved together.

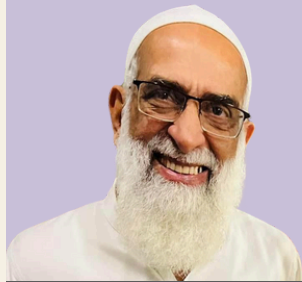
We remain intentionally unconventional. Guided by our trauma-informed belief that healing and education must move together, we focus not simply on operating schools but on nurturing ecosystems where safety, dignity, and emotional well being are lived daily. Across KF this philosophy continues to shape learning environments rooted in trust and care.

The year called for resilience and clarity. We strengthened governance and human capital systems, expanded emotional intelligence and social emotional learning practices, deepened donor and partner relationships, and extended safe learning spaces into new communities. ”

BOARD OF DIRECTORS 2023 - 2026



SABINA KHATRI
Chairperson



DR. SAEED ISMAIL
General Secretary



SYED GHAZANFAR AGHA
Finance Secretary



SANNA TAHIR
Vice Chairperson



SAMIA MUJTABA
Joint Secretary



SHAZYA DIWAN
Public Relations
Secretary



SEEMA YASIR QADRI



WAQAS KHATRI



NAUSHEEN ZAID



ANWAR MUJTABA



ZEESHAN NAEEM
Co-Opted
Member



ZARA JAMAL
Co-Opted
Member



SOHAIL JAPANWALA
Co-Opted
Member

BOARD OF DIRECTORS USA

501(C) Registered



DR. JAMIL KHATRI
Chairman-KF-USA



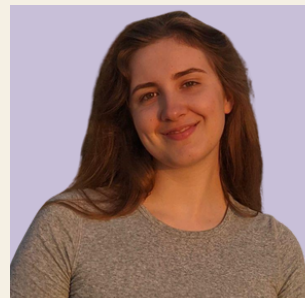
SABINA KHATRI
Vice President



REHANA KHATRI
Treasurer



BASSAM KHATRI



HAYLEY LAMONTAGE

Kiran Foundation - US is a 501(c)(3) organisation in the United States of America that functions as a branch of its parent organisation (Kiran Foundation) to facilitate the collection and transfer of charitable and tax-deductible donations in the US. These funds are then utilised to support the mission of Kiran Foundation in Pakistan.

KFUS was founded on 31 Aug 2016 in Delaware.

DE State File number: 5812895.

Federal Employer Identification Number (EIN): 47-5553655.



CHAIRMAN -KF- USA & TREASURER
**Dr Jamil &
Rehana Khatri**

BOARD OF DIRECTORS' NOTE

Rehana & Dr. Jamil Khatri

“ It gives us great pleasure to write the testimonial in support of Kiran Foundation. We have been a small part of Kiran Foundation since its early days in 2009. The work of Kiran Foundation in Pakistan is nothing short of transformative. In communities where access to basic services like education, healthcare, and clean water is often limited, KF has stepped in not just as aid providers but as partners in building a sustainable future.

Our personal experience with their initiatives has been incredibly moving. We have witnessed firsthand how a simple intervention, such as providing a scholarship or access to a free medical camp, can fundamentally alter the trajectory of a person's life. KF has reached the forgotten and the marginalized, offering dignity and a pathway to self-reliance.

From the rapid response of emergency services during natural disasters to long-term projects such as vocational training for women and educational support for children, KF has demonstrated immense compassion and a deep understanding of local needs. In addition, KF has become a symbol of dedicated service, operating with transparency and a profound commitment to humanity.

KF has been instrumental in fostering hope and driving positive social change across the nation. The dedication of the staff and volunteers is a testament to the power of collective action and compassion in overcoming adversity. We wholeheartedly support and commend the tireless work of Kiran Foundation in Pakistan. ”



SOHAIL JAPANWALA



ZOHRA OMAR

GENERAL BODY MEMBERS

- Abdul Kabir Kazi
- Abida Dada
- Abida Garib
- Afshan Bandeali
- Afsheen Teli Dada
- Ahmed Ali Shah
- Ambreen Khanani
- Amina Siddique
- Ayesha Hyder Hai
- Danish Aman
- Dr. Amjad Saqib
- Dr. Dilshad Dayani
- Dr. Qurat-ul-Ain Bakhteari
- Dr. Shifa Naeem
- Fizza Sohail
- Huda Ahmed
- Irfan Khatri
- Madiha Shaikh
- Mansoor Balouch
- Mariam Faisal Amin
- Nadia Muhammad
- Ramsha Nassr
- Razzaq Pardesi
- Saba Jamil
- Sabeen Naz
- Sania Saeed
- Sara Khatri
- Shabana Naeem
- Shazmeneh Durrani
- Sohema Rehan
- Summaiya Chawla
- Syed Shahpur Agha
- Yahya Chawla
- Zainab Fawad
- Zohair Allibhoy
- Zohra Jabeen Omar



ZOHRA JABEEN
COO



SOHRAB BALOCH
Operations



MADIHA SHAIKH
Education &
Deputy



SABEEN NAZ
Empowerment
& PR



TOOBA ASHRAF
Mental Health



HARIS BALOCH
Procurement



TALIB KHETA
Finance



SAIMA KHATRI
Operations



HUZAIFA SHAH
Human
Resources



AQEELA UMRANI
Marketing



ABIDA WAHEED
DCTO Education



SHFAQ FAISAL
Roshni
Empowerment



NASEEM AKHTAR
KSKP Education



KHUSHBAKHT IRFAN
KSKP Education



HAFSA SHAHARYAR
Alamabad
Education



SHAFI SHEIKH
GB Education



SARWAT MIFZAL
DCTO
Education



SANA PARAS
DCTO
Education



USAMA GOHAR
Finance



FAREEHA SHEIKH
DCTO
Education



AREEBA HUNAIN
Satellite



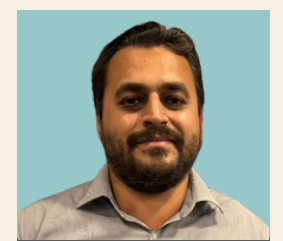
RAMSHA HANIF
Uraan



SUNAINA KHAN
Flagship

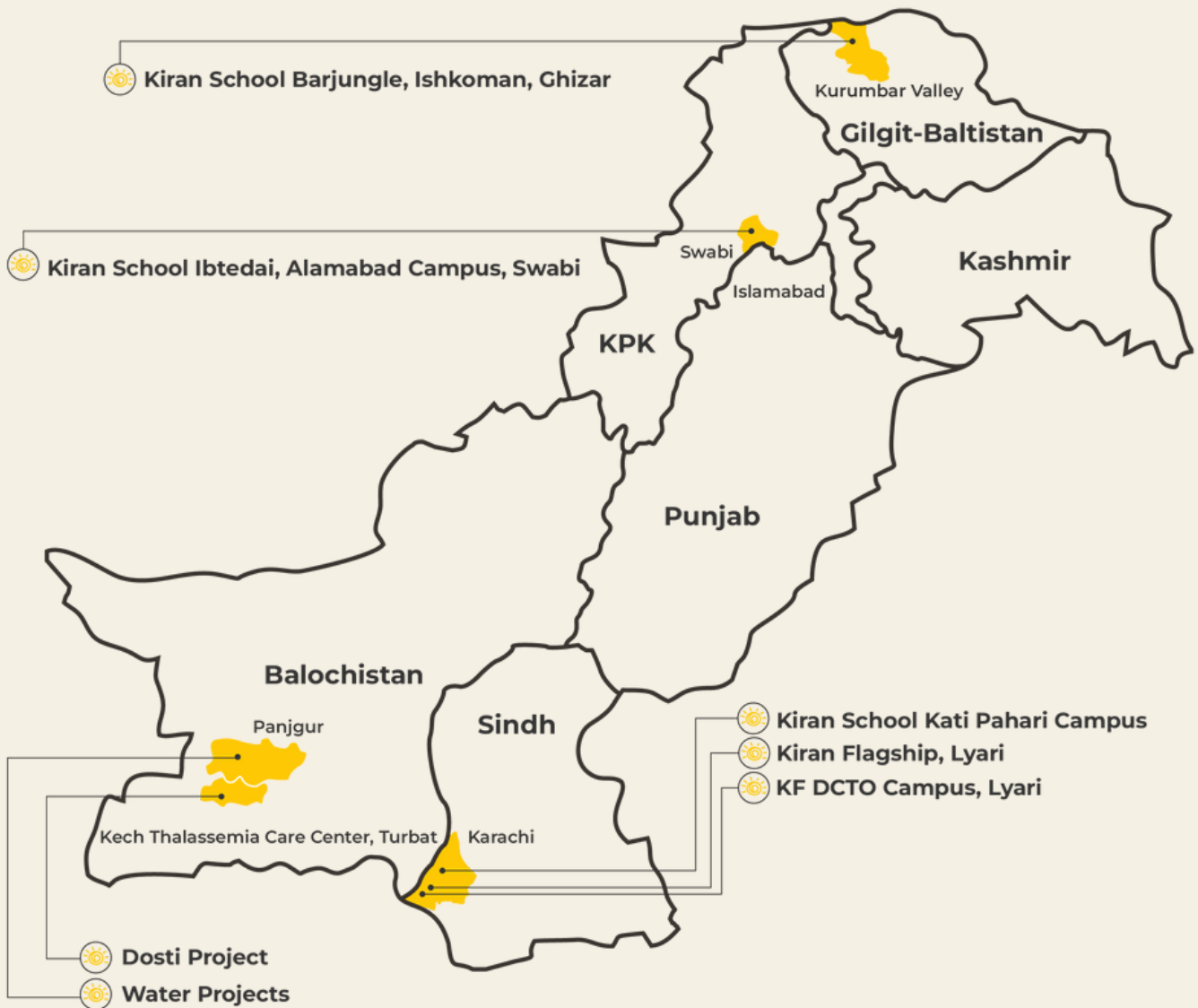


HAJI NAZEER
Community



SAAD KHAN
Finance

OUR GROWTH





ABOUT US

Kiran Foundation is a non-profit registered organization that provides transformational education and holistic support to underserved communities. We educate children and their mothers in a way that is truly empowering and nurturing for the entire family unit. Our system is rooted in humanitarian values and a deep understanding of mental health and wellbeing, with the aim of building safe and happy spaces where children and their families are free to grow, flourish, and thrive together. From an early age, we focus on developing positive habits and hobbies in children, nurturing them into kinder, more mindful, and emotionally resilient individuals.

Beginning its journey in just two small rooms, Kiran Foundation has grown steadily to extend its impact across the nation while remaining deeply connected to its roots. For over two decades, and with more than a decade of dedicated work in Lyari, a resilient yet often misunderstood community marked by profound challenges, we have created safe, supportive environments through Pakistan's first Mother and Child Trauma-Informed School System. Our trauma-informed approach has touched over 6,000 lives, transforming families, strengthening communities, and contributing to positive change in Lyari and beyond.

“Kiran is a gift from one mother’s heart to another.”



Sabina Khatri

“This work began long before it had a name. Growing up, I volunteered alongside my mother in the Kiran community and witnessed, up close, the emotional realities of children and mothers living with poverty, violence, and instability. Years later, after completing my Master’s in Clinical Psychology and returning to Pakistan, I knew I did not want my work to exist only inside clinic rooms. Not because therapy isn’t important, but because I had come to understand that the mental health crisis we face is systemic, and it begins much earlier. Healing happens in community.



CO-FOUNDER
SARA KHATRI

SARA KHATRI**Co-Founder Trauma-Informed School System**

Schools, I realised, are the heart of communities.

This understanding led me to develop a Mental Health and Wellbeing Framework for Kiran Foundation, one rooted in Kiran's educational values and shaped by the lived realities of the families we serve. Over time, this evolved into a formalised trauma-informed school system rooted in the belief that when we educate and empower children, their families, and their teachers in the impacts of trauma and the importance of emotional wellbeing, it ripples far beyond the classroom.

Children do not learn in isolation from their emotional worlds. Stress, violence, neglect, and shame often show up in classrooms. A trauma-informed approach helps educators respond with understanding rather than punishment, creating spaces where children feel safe enough to learn.

This work is not about turning teachers into therapists. It is about building awareness, emotional language, and practical tools, for children, educators, and caregivers alike. When adults feel supported and informed, they are better able to support the children in their care.

From 2016 to now, as this work continues to grow and evolve, it has been a deeply special experience to witness its impact over time. This has been one of the most meaningful projects I have ever worked on, and seeing the quiet, lasting ways it shows up in the schools, relationships, and lives continues to fill me with gratitude and purpose. I am so moved by each and everyone that plays a role in upholding this system of care and collective healing. ”



MENTAL HEALTH & WELLBEING LEAD
Tooba Ashraf

TOOBA ASHRAF

Mental Health & Wellbeing Lead

“ Working at Kiran Foundation has been a truly meaningful experience, one that has shaped me both personally and professionally. The community here is incredibly warm, open-hearted, and welcoming. Every intervention, initiative, and support mechanism offered by my department has been received with trust, respect, and genuine appreciation. This mutual relationship of care and understanding is what makes the work so fulfilling.

The Mental Health Department was established in 2017 by Ms. Sara Khatri, whose vision and commitment laid the foundation for the trauma-informed practices we uphold today. Alongside this, for over two decades, Sabina Aunty has been pioneering trauma-informed interventions within our preschool system. Their groundwork gave us the strength and clarity to build a system that prioritizes emotional safety, empathy, and promoting wellbeing through compassion.

Today, under the umbrella of our Mental Health Department, working as a lens we are expanding our mission and reimagining the future. Our goal is to strengthen trauma-informed education across all sections of Kiran Foundation and continue serving children, mothers, fathers, employees, and the wider community with compassion and expertise.

Summarizing my journey in words is difficult, because so much of it lives in the moments, the breakthroughs of a child, the relief in a mother's eyes, the healing conversations with fathers, the resilience of our employees, and the unwavering spirit of our community.

What I can say with certainty is that working at Kiran Foundation has been an honor and a privilege. Every day here reaffirms my belief in the power of empathy, connection, and collective healing. It is, and will always remain, a pleasure to serve this community. ”

OUR LENS

An integrated approach to education, mental health and wellbeing centering prevention-focused mechanisms.

The MHW Department is committed to creating an empathetic, supportive space where mental health is prioritised and accessible. Its mission is to promote mental health awareness, build resilience and self compassion to support holistic growth.

More than **4000 individuals** and families were supported through MHW initiatives in the year 2024 - 25.



SALIENT FEATURES

HOSLA

Mutual Support Groups facilitated by mental health professionals for individuals who have experienced calamities and adversities.

TRAUMA-INFORMED SCHOOL SYSTEM

The trauma-informed school system operates at our adopted government school in Lyari, providing a safe and supportive environment for children and mothers

COMMUNITY AWARENESS

Open discussion forums and speaker sessions are held in Lyari and Kati Pahari to raise awareness about self-care, mental health, and emotional well-being.

WOMB

A specialised intervention designed to incubate and support children from the overwhelming effects of trauma.

MENTAL HEALTH & WELLBEING HIGHLIGHTS



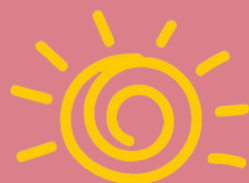
Support Group: Continued nurturing safe emotional spaces for mothers and women, offering a platform for shared healing, expression, and collective support.



NLP Training: Delivered a six-week capacity-building series that strengthened staff competency and encouraged personal and professional growth.



"Wellbeing Is Just a Flight Away:" A community-wide initiative promoting emotional health, mindfulness, and holistic wellbeing.



HEAD OF EDUCATION
Madiha Shaikh

MADIHA SHAIKH

Head of Education

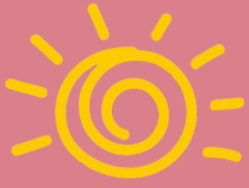
“ Serving as the Head of Education at Kiran Foundation has been one of the most meaningful journeys of my life. Every day, I witness the power of education to transform not only the lives of our children, but also their families and communities.

This year has been a powerful reminder of why we do what we do. Our classrooms have become safe, nurturing spaces where children are growing with confidence, finding their voices, and discovering their potential. Through our trauma-informed approach, dedicated teachers, and strong community partnerships, we have seen remarkable growth in student confidence, attendance, and learning outcomes.

The beauty of our work lies in the diverse opportunities we provide for our students to recognize their strengths. Whether through academics, leadership, arts, sports, or life skills, every child is given a chance to feel accomplished in their own unique way.

At the heart of our mission is the belief that every child deserves love, a caring adult who never gives up on them, and someone who holds them with trust, hope, and consistency. These values guide my work every day.

I remain deeply committed to continuing to make a difference in the lives of the children under my care and beyond, ensuring that each child feels seen, supported, and empowered to dream without limits. ”



KIRAN FOUNDATION
DCTO CAMPUS



Kiran Foundation - DCTO Campus (Lyari)

SAFE AND HAPPY SCHOOL(S)

In 2014, the Flagship Model was extended to a whole school through the adoption of the DCTO Government School by the Sindh Education Foundation in collaboration with the Government of Sindh.

Previously a neglected space, the School now stands as a state-of-the-art hub of learning for children and their mothers. Within two years, it emerged as Pakistan's first Trauma-Informed School system, providing a safe and happy environment. The families became ambassadors of change, bringing about an educational revolution and transformation in Lyari. This building now functions as both a school and community centre.



753 Students



511 Mothers



62 Teachers



1264 + Beneficiaries



Pakistan's First Mother and Child Trauma-Informed School System



DCTO Government School (Lyari)

DOSTI PROJECT

The Dosti Project is a special initiative by Kiran Foundation that nurtures friendship, empathy, and emotional resilience among children. Through interactive activities, guided sessions, and shared experiences, students learn to support and care for one another, building bonds that go beyond the classroom.

Children from our campus visit and host partner schools, bridging communities beyond Lyari. They experience each other's world, form meaningful friendships, and practice kindness, collaboration, and empathy. The Dosti Project is not just a program; it is a beautiful journey of connection, understanding, and belonging.



Habib School



The Kiva School



The IVY School



The Learning Tree



Generation's School



The Bayview Academy



Nafeesa Forum

Educated, aware, and empowered mothers are key to shaping successful future generations. Mothers are the true changemakers of Kiran Foundation and the driving force behind the transformation across our programs and campuses.

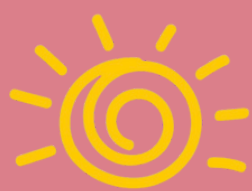
The Kiran School System is a mother-and-child model, where a mother's enrollment happens alongside her child's admission. Both grow together as learners, supporting each other's development.

Nafeesa Forum began as mandatory classes for mothers of toddlers at Ibtidai School and evolved into a core part of Kiran's mission. In 2010, the program was renamed Nafeesa Forum in memory of a deeply committed mother.

The Forum offers classes three times a week through interactive activities and guided sessions, helping mothers discover new skills, increase awareness of their rights and responsibilities, and focus on personal growth. Mothers also enjoy picnics, outings, and access to therapy and counseling when needed.

As part of the Forum, **Dr. Javed Iqbal's Effective Parenting Course** was introduced across campuses. In November 2025, **52 mothers** from the **DCTO Campus Senior Section** completed the program, with certificates personally awarded by Dr. Javed Iqbal.





KIRAN SCHOOL
KATI PAHARI

Kiran School Kati Pahari

SAFE AND HAPPY SCHOOL(S)

Ambreen Khanani, a kind and generous donor, gifted the Kati Pahari Campus to Kiran Foundation in 2022 in loving memory of her parents.

This campus embodies Kiran Foundation's unique mother-and-child model, beginning with the Ibtedai Program and continuing up to Grade 1. After Grade 1, our ambassadors secure admission in mainstream private schools on merit, following the Flagship Ambassador Program.



58 Students



39 Mothers



10 Academic Staff

KIRAN FLAGSHIP PROGRAM AT KATI PAHARI CAMPUS

This year, **9 students** from our Kati Pahari Campus have secured admission in mainstream private schools on merit.



Civilizations Public School **8**



The Elixir School **1**



Kiran School Alamabad (Swabi)

SAFE AND HAPPY SCHOOL(S)

This is the third campus where Kiran Foundation runs the Kiran Ibtidai Program, in partnership with **Rashid Memorial Welfare Organization**, launched in 2022. Our unique Mother-and-Child Model prepares both mothers and children for mainstream schooling.



48 Students

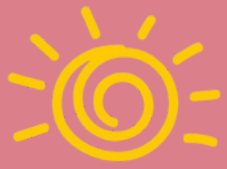


42 Mothers



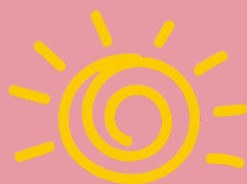
5 Academic Staff





KIRAN SCHOOL
ALAMABAD (SWABI)





KIRAN SCHOOL
BARJUNGLE (KSBJ)

Kiran School Barjungle (KSBJ)

SAFE AND HAPPY SCHOOL(S)

Kiran Foundation has been supporting KSBJ, previously known as Kurumbur Valley School, for the past three years. In 2025, we fully adopted the school and are now implementing our Mother-and-Child Model. The school currently runs from Foundation Class to Grade 8, and we have recently acquired adjacent land to further expand the campus.



145 Students



10 Academic Staff

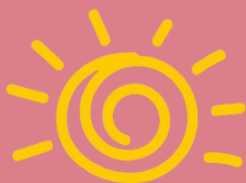




KIRAN
FOUNDATION



HOL PRESCHOOL
Enlightening Hope



KIRAN SATELLITE MODEL
PRE-SCHOOL TILL GRADE 2

Kiran Satellite Model

The Kiran Satellite Model is the first replication of the Kiran Ibtedai Mother-and-Child Model, launched in partnership with the House of Learning at their adopted school in Lyari. Led by Areeba Hunain, who shadowed Kiran Foundation's founder for six years, the model has been implemented with care and integrity from Foundation Class to Grade 2. It now provides a safe and happy learning space for the young children of Lyari.



150 students

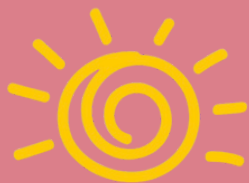


78 mothers



10 Academic Staff





KIRAN FLAGSHIP
AMBASSADOR PROGRAM

Flagship Ambassadors Program

Our pioneer program, which started in 2006, aims to transform the lives of families in Lyari by offering a holistic mother-and-child preparatory preschool (The Ibtedai Program) and facilitating their access to reputable schools across Karachi.

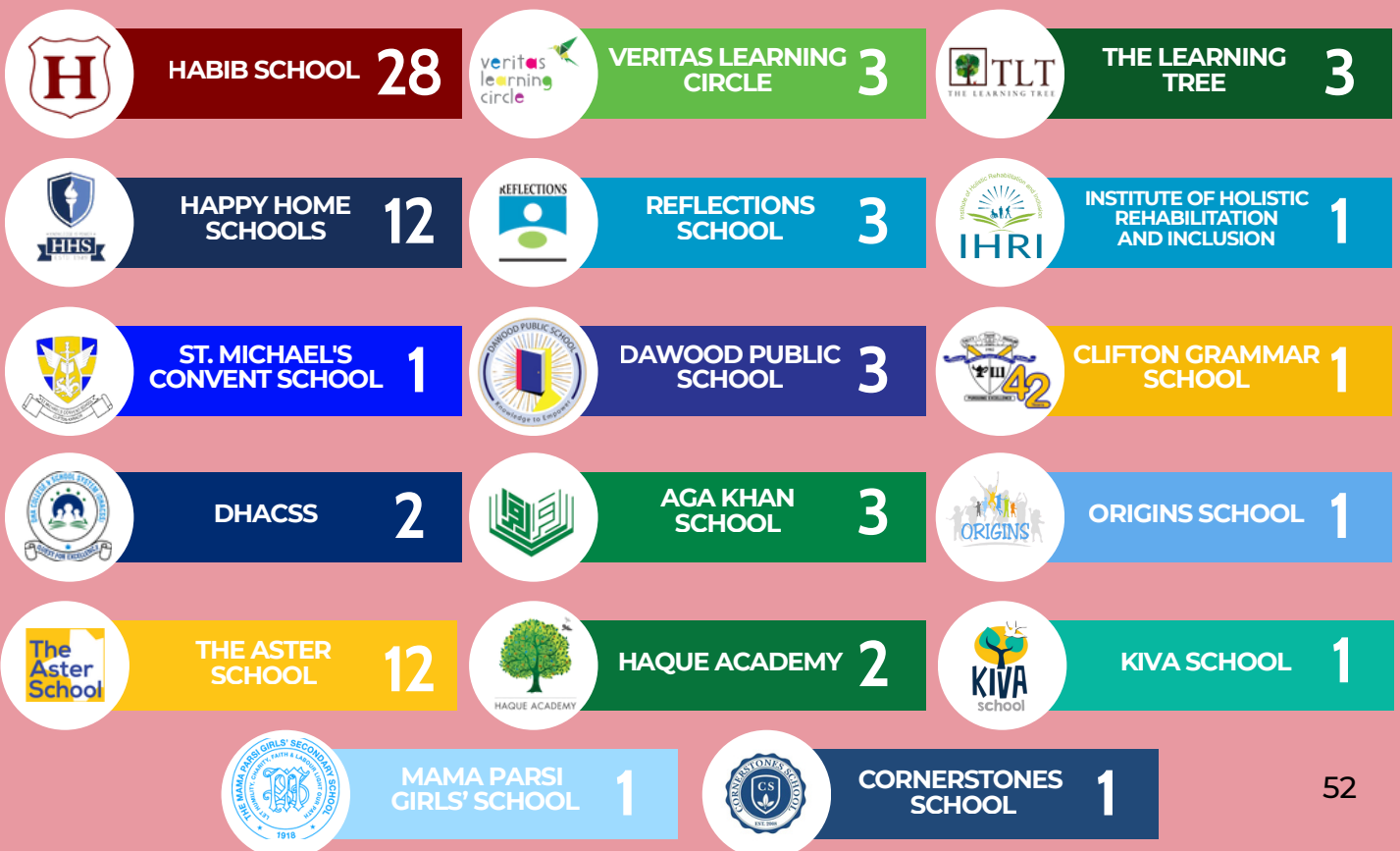
This program bridges socioeconomic divides, providing students with equal access to quality education and diverse networks. By stepping out of their comfort zones, these children break stereotypes about Lyari, representing a positive image of their community as Ambassadors of Change.


78 Ambassadors

60 Families

1 Team Member

AMBASSADORS IN PRESTIGIOUS MAINSTREAM SCHOOLS





URAAAN COLLEGE & UNIVERSITY SUPPORT PROGRAM

The program was created to support students graduating from the DCTO Campus. While nurtured with holistic activities and social-emotional learning throughout school, we were previously unable to track them, as there was no program to guide and support them in higher education.

To address this, the program now supports students through college and university, helping them become independent and self-reliant. Launched in 2017, it provides higher-education support to all financially deserving students across Karachi and beyond, ensuring that no student is left behind due to lack of finances. The program is open to all, regardless of religion, culture, or background.



School: 28



College: 101

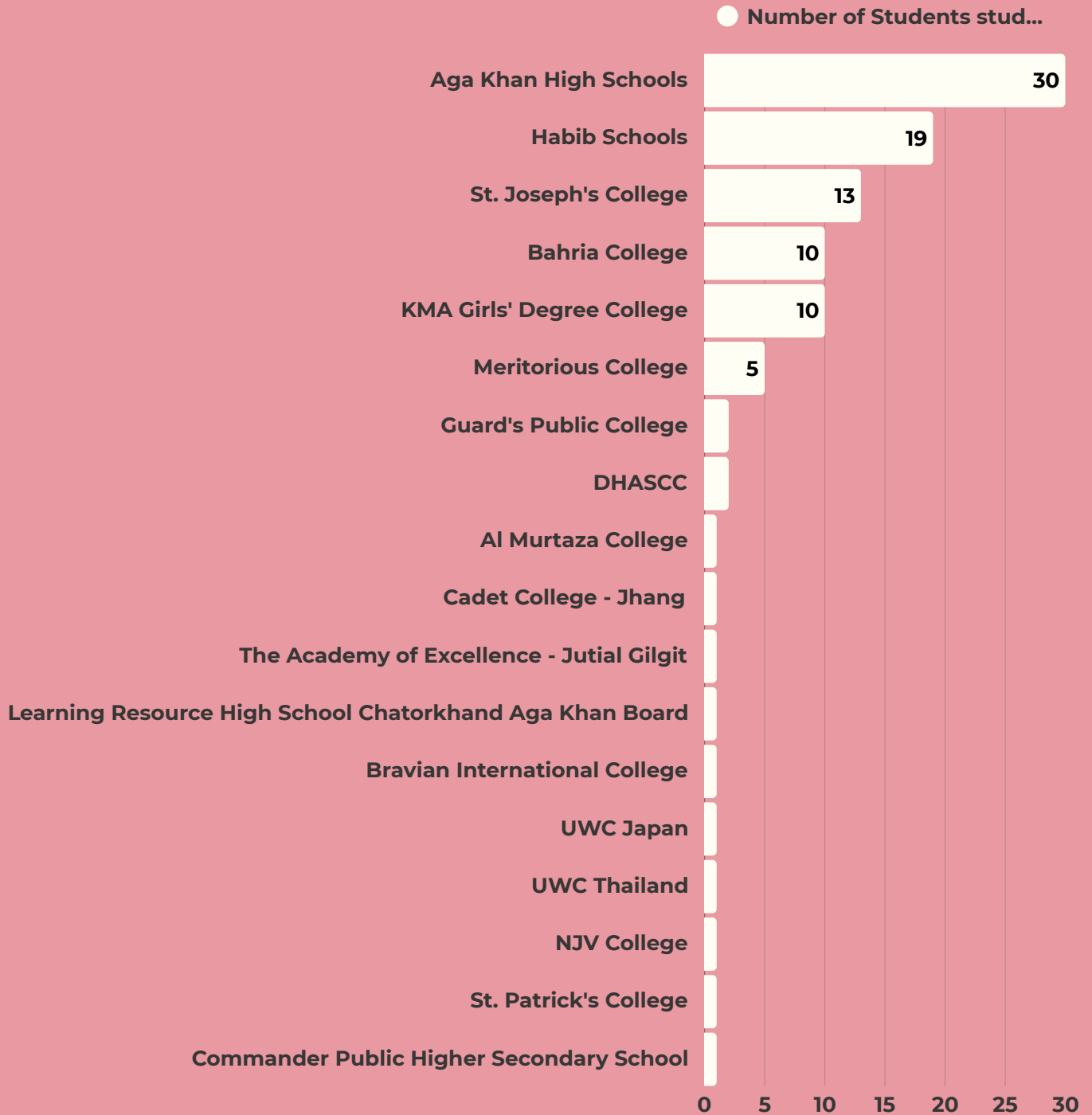


University: 123

**Total Uraan
Ambassadors:
252**

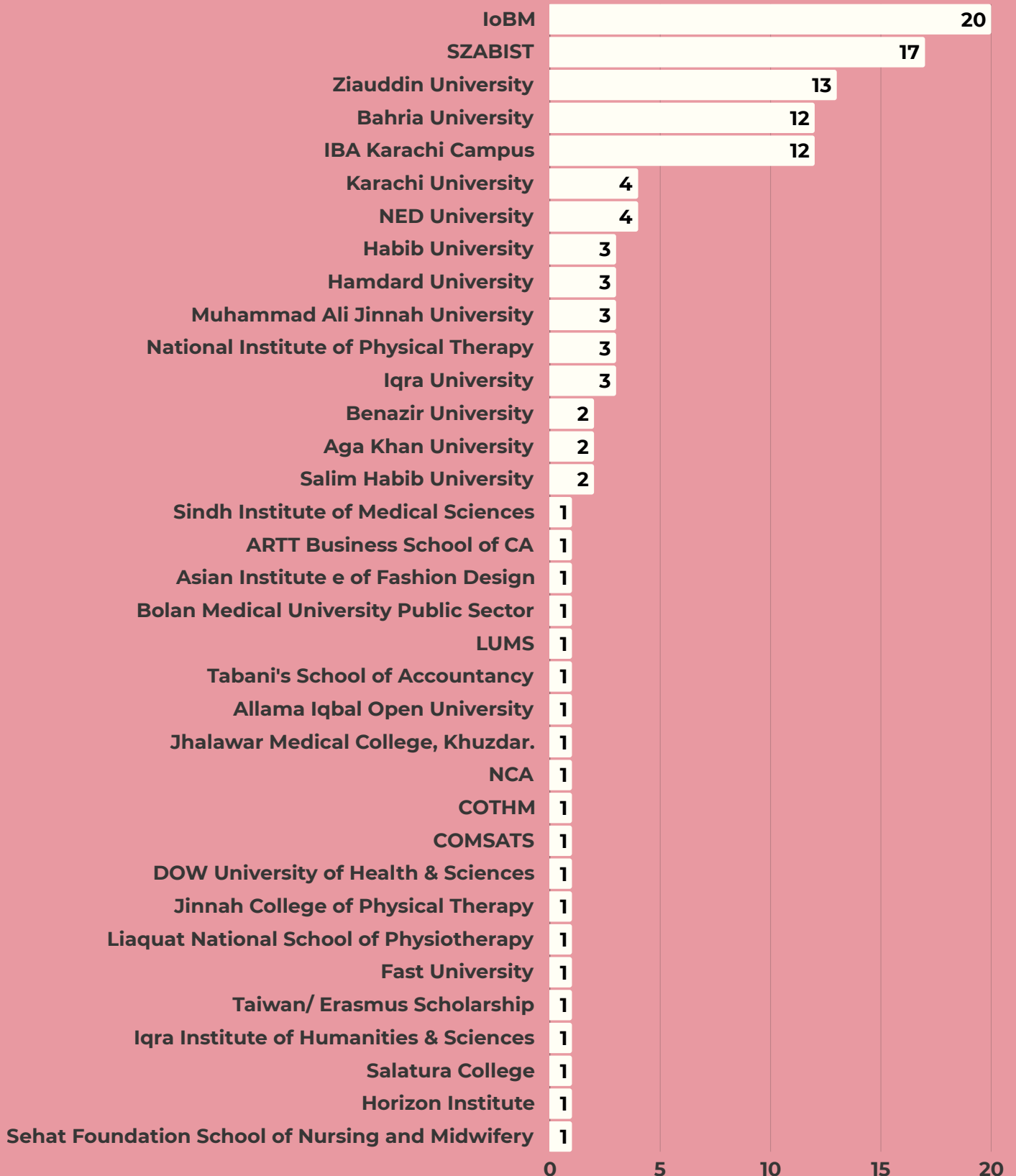


STUDENTS STUDYING IN DIFFERENT COLLEGES



NUMBERS OF STUDENTS STUDYING IN DIFFERENT UNIVERSITIES

● Students in Different Universities



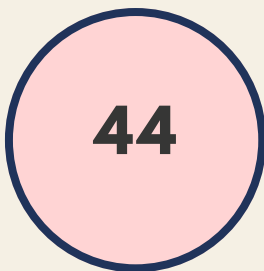
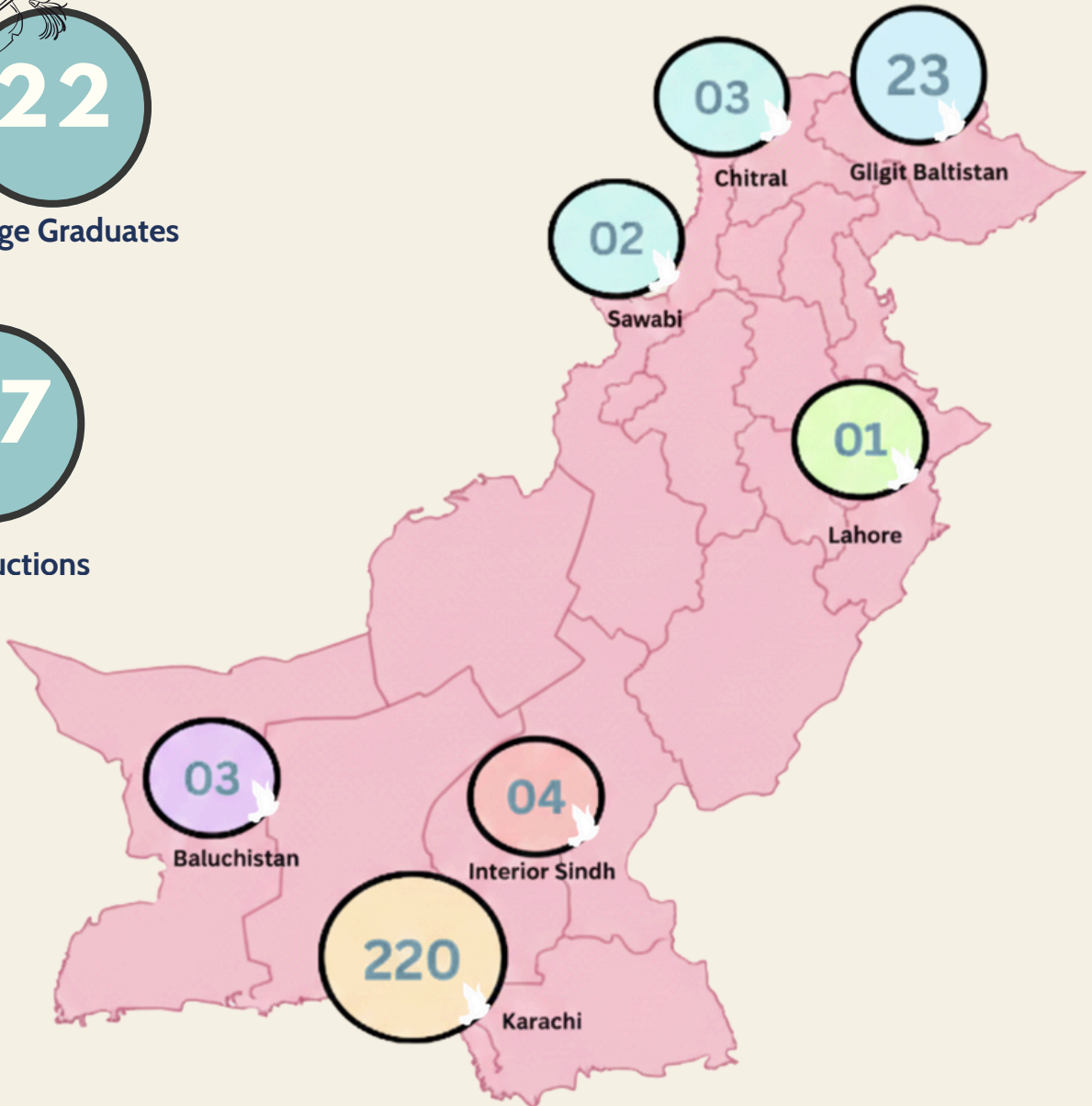
URAAAN: EXPANDING ACROSS PAKISTAN



College Graduates



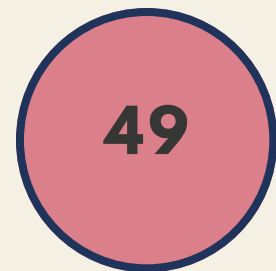
New Inductions



Community



DCTO Alumni



Ibtedai Alumni

KIRAN AMBASSADORS

GIVING BACK TO THE COMMUNITY



DCTO CAMPUS

- The Falah Team conducted a summer camp for primary students who needed academic support and were demotivated.
- Ambassadors are also volunteering in the preschool section and completing internships across various departments.
- Ambassadors also participate in Rizq Foundation's Iftar Drive, giving back during Ramadan.

KS KATI PAHARI

The Falah Team, along with other ambassador friends, visit twice a week to support the evening program.

KS IBTEDAI ALAMABAD

Ambassadors spend time with preschool students, engaging them in activities and learning sessions.

KS KIRAN SCHOOL BARJUNGLE

Ambassadors conducted a summer camp with interactive activities and organized a winter drive to support students affected by floods.

KIRAN GHAR

Ambassadors led the summer camp, planning and executing activities for younger children in the Flagship Program.

LOCAL COLLABORATIONS

They organized a summer camp with Dosti Project schools, including fun-filled activities, a mela, and general knowledge sessions to engage the community.

A GLIMPSE OF OUR SUCCESS STORIES



HARIS SHAKEEL
KIRAN AMBASSADOR

HARIS SHAKEEL

“My journey in rowing started in 2021 with a simple but powerful dream that one day I have to compete internationally and represent Pakistan and Kiran Foundation. From the beginning, something inside me kept pushing me forward. That inner voice refused to let me give up because I knew I had to complete this dream.

All of it led me to Russia, where I won the bronze medal at the 64th Grand Moscow Regatta representing Karachi Boat Club and became the First Pakistani to achieve this milestone. None of this would have been possible without Maa Sabina Khatri, whose constant support and belief in me shaped who I am today. She is truly the best mentor I've ever had.

I live by a quote:

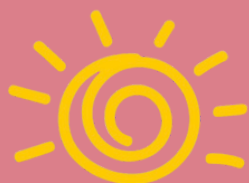
“To get something you never had, you have to do something you never did.”

This medal is not just a win, but a reflection of persistence, belief, and the life changing support of Kiran Foundation.”

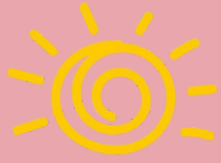
Expanding Horizons in Pakistan's Maritime and Blue Economy

“ This experience gave me a deeper understanding of how Pakistan's maritime sector can play a pivotal role in economic growth, sustainability, and national security. It also highlighted the importance of collaboration between government, industry, academia, and communities to unlock these opportunities. These insightful sessions were delivered by distinguished experts, offering in-depth perspectives on the economic, environmental, and security dimensions of Pakistan's maritime sector.

A heartfelt thanks to Kiran Foundation for giving me this opportunity to learn, connect, and broaden my understanding of an industry so vital to our nation's future. ”



MEHMOOD HUSSAIN
KIRAN AMBASSADOR



MARIA QAISER
KIRAN AMBASSADOR

“ I joined Kiran when I was nine, never imagining how much it would transform my life. The values, opportunities, and support at Kiran shaped my journey and helped me become one of five finalists for the prestigious United World Colleges (UWC) Program in 2024.

With the guidance and trust of Kiran and Maa Sabina, I am now studying in Japan through the UWC program, pursuing the rigorous International Baccalaureate Diploma, and will graduate in May 2026.

That nine-year-old girl could never have imagined exploring the world she once dreamed about. Today, I am living that dream, and it all began with Kiran and Maa Sabina, whose belief in me made everything possible. ”





HASSAN ALI
KIRAN AMBASSADOR



HASSAN ALI

KIRAN AMBASSADOR

“Being selected to study at UWC Thailand in early 2025 was a defining achievement for me. The journey to this point was far from certain. I applied in late 2024 and underwent a rigorous application process, followed by two demanding rounds of interviews. Each stage carried uncertainty, and for months the outcome remained unclear. Receiving the final offer was a moment of relief and pride, marking the result of sustained effort and belief.

Soon after securing my place at UWC, I appeared for my Cambridge examinations. Shifting focus from interviews to exams required discipline and composure at a time when expectations were high. Achieving strong results during this period became another milestone, reinforcing my ability to perform under pressure and remain consistent through change.

Life at UWC Thailand has since expanded my perspective in unexpected ways. Having previously been part of a rowing team, I transitioned into kayaking, learning to adapt and embrace new challenges. I became actively involved in debating and began organizing Tea Talk sessions, where students across the world sit and engage in thoughtful discussions around global issues. These experiences have strengthened my confidence, openness, and ability to engage meaningfully with diverse viewpoints.

Alongside this, I carried forward work I had begun back home through Falah, a youth led organization focused on service and social engagement back at home. At UWC, this instinct to bring people together has taken new forms in a global setting. Looking back on 2024 to 2025, this year stands as a period of achievement, growth, and widening perspective, shaping how I move forward with purpose and clarity. ”

“ Last year was a turning point in my life. As college ended, I faced uncertainty about my future and explored universities where I could grow academically and personally. During this time, the support from Kiran was a constant source of strength.

Waiting for university admission was nerve-wracking, and I vividly remember checking my email with hope and fear. Then came the life-changing moment: I was accepted into the Faculty of Arts and Sciences at Aga Khan University. The joy I felt was beyond words relief, gratitude, and a deep sense of accomplishment.

This achievement would not have been possible without Kiran, especially Sabbi Maa, whose guidance and encouragement helped me overcome self-doubt. Looking back, it amazes me how I went from searching for my path to stepping into this new chapter. I carry immense gratitude and hope to continue growing, knowing Kiran will always be a part of my journey.”



TEEHAM ABDUL WAHEED
FROM LYARI TO AGAKHAN



RAGHAV AASMAL FROM LYARI TO USA

A proud student of Kiran Foundation DCTO Campus since 2015, now Uraan ambassador, Raghav was selected for the prestigious Seeds of Peace Leadership Program and traveled to the USA to represent our community on a global platform.

HASNAIN AHMED KIRAN AMBASSADOR



After my first visit to Balochistan, I wrote that I had left my heart there and that next time I would return not to visit Balochistan, but to visit my heart. Later, I wrote that my heart lived in the valleys of Gilgit.

But reflecting on this past month, I realize something deeper.

My heart is not in Balochistan.

Not even in Gilgit.

My heart lives in the vision of Kiran in its purpose.

Wherever Kiran goes

to the deserts of Balochistan, the valleys of Baltistan, or the fields of Sindh my heart goes too.

I am in love with this purpose: compassion, inclusivity, love, brotherhood, and shared connection.

Thank you, Sabbi Maa, for giving me a purpose that keeps me striving, awake in the search for excellence, and deeply connected to myself.

This is the best thing happening to me.



TRAINING AND DEVELOPMENT

Building Safe and Happy Spaces (BSHS)

This project, funded by the European Union (EU) in collaboration with UNODC and NACTA, enabled Kiran Foundation to develop five comprehensive modules capturing two decades of its transformative work. Each module focuses on a different theme, showcasing our interventions and the culture of safe, supportive, and happy spaces at Kiran Foundation.

In addition to the modules, 21 free resource videos were produced, offering complete standalone guidance while complementing the modules when used together. The training is designed for everyone who wants to make their space safe and happy, including educators, leaders, and caretakers.

At launch, the program received nearly 500 sign-ups, from which **104 participants** were selected. Participants were divided into two groups: **Justuju (51 participants)** and **Sabaat (53 participants)**. The sessions were designed to help participants reflect on their own thoughts and actions and learn practical ways to create safe and happy spaces for themselves and the children around them.



Capacity-Building Trainings for Staff

TOASTMASTER PROGRAM

Ms. Rahima, a certified facilitator in the internationally recognized Toastmasters Program, conducts weekly sessions at DCTO Campus for 20 teachers. She trains them in public speaking, presentation skills, and English proficiency, using structured practice, feedback, and evaluations.

STEM TRAINING

Kiran Foundation trained 23 primary and secondary teachers, along with 2 STEM facilitators, in coding and robotics through PSSEC, led by Ms. Zartaj Waseem, to strengthen digital skills and enhance STEM teaching at the DCTO Campus.

SCIENCE FUSE TRAINING

As part of the Science Sab Kay Liye program, 12 teachers from Kindergarten to Primary and 12 mothers received year-long training through Science Fuse to strengthen hands-on science teaching and learning at DCTO Campus.

KARACHI DOWN SYNDROME PROGRAM

Kiran Foundation is training teachers on Down syndrome and inclusive practices to collaborate with KDSP's preschool under the Dosti Project.





EMPOWERMENT & ENRICHMENT HEAD Sabeen Naz

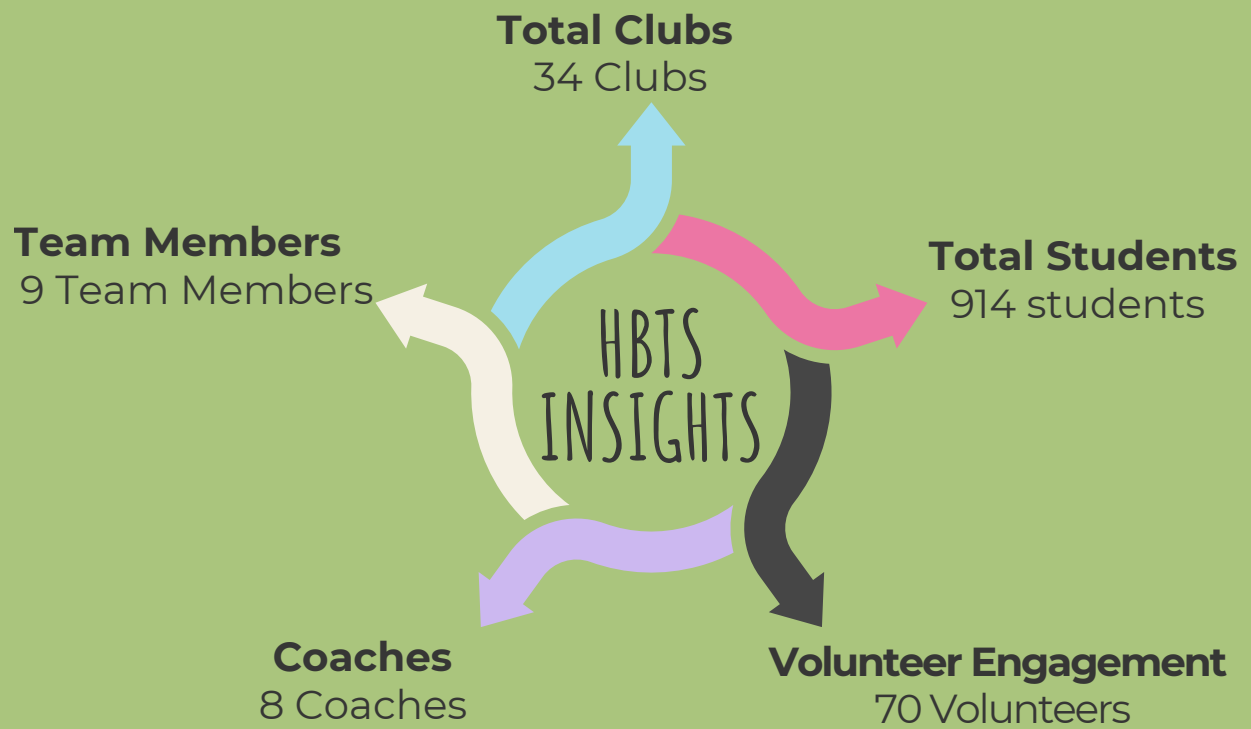
“ I am grateful to have witnessed the growth of Kiran Foundation’s mission and deeply honored by the trust placed in me to contribute to its impact. My journey from Program Manager to Head of Department is rooted in conviction and responsibility, as Kiran is not merely a role for me but a lifelong commitment, by the will of Allah ﷻ. Working under the guidance and mentorship of Sabina Khatri has shaped me in knowledge, character, and compassion, and strengthened my responsibility to give back to the community of Lyari. Serving children, youth, and mothers continues to be my greatest source of purpose and joy, teaching me humility, resilience, and the power of sports as a way of life. I pray that Allah continues to bless Kiran Foundation with strength, wisdom, and steadfastness to carry this mission forward. ”

HADIA CLUBS - BEYOND THE SCHOOL

Kiran Foundation's Beyond the School (BTS) initiative extends learning beyond classrooms through clubs, mentorship, and community building.

A dedicated BTS team of six coaches ensures quality delivery and organizes collaborative competitions across Karachi. Taha Din has been a consistent patron of the HBTS program, helping create safe spaces where children discover their strengths and stay away from negative influences.





HADIA BEYOND THE SCHOOL CLUBS HIGHLIGHTS

GYMNASTICS



DEBATE



FOOTBALL



KHUDMUKHTAAR

CULINARY



TECH



KARATE



LANGUAGES

ART



MUSIC



CRICKET



THEATER

ROSHNI PROGRAM

Safe space for women

The Roshni Program was created in response to community women who were unable to secure seats for their children at Kiran Foundation DCTO Campus but expressed a strong interest in the Mothers Program, a key part of the schooling system.

Operating at Salma Ghar, a safe space for women donated by Mr. Irfan Pardesi in honor of his mother, the program offers non-formal and informal education through empowering training sessions and workshops. It helps women recognize their strengths and honor them within their own healthy boundaries, with the speakers and facilitators serving as mentors who guide and inspire them toward emotional, social, and financial independence.



ROSHNI PROGRAM

TECH



BAKING



BIKE RIDING



KHUDMUKHTAAR

STITCHING



CROCHET



AWARENESS
SESSIONS



BEAUTICIAN

ART



FITNESS



MEHNDI



RESIN ART

SULAH SE SALMATI (PEACE - BUILDING)

Led by Dr. Dilshad Dayani, Associate Professor at Columbia University, this peace-building program has trained over 400 mothers consistently over the past eight years and continues to empower mothers this year.

It focuses on strengthening mother-child communication, empathy, and emotional understanding.



 DR. DILSHAD DAYANI

“I have been working with dear Sabina on different projects for more than a decade now. It is quite humbling and energizing. Delivering the Sulah Se Salamati (Resolve For Peace) program is grounded in dignity, dialogue, and lived human experience. With strong on-ground support from Shafaq, the work has unfolded over eight years, often faith, and identity.

Each session reinforces my belief that peacebuilding begins with inner regulation and honest communication.

With consistency and diligence, I witness voices strengthen and agency return.

This is how quiet commitment becomes lasting social impact.”





OUTREACH



SHAFQAT BHARI SHAAM

Shafqat Bhari Shaam was held at Danish Aman's residence, who graciously hosted the event and organized the fundraiser, in collaboration with the board members of Kiran Foundation. The evening was hosted by Sania Saeed, our brand ambassador, and graced by Dr. Amjad Saqib as the chief guest, bringing together supporters, philanthropists, and long-standing allies.

Ms. Sabina Khatri, Founder of Kiran Foundation, shared insights into the organization's journey, impact, and future direction, highlighting its commitment to education, mental wellbeing, and community-led transformation.

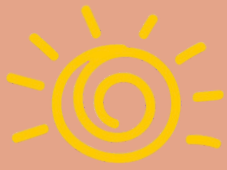


SHAFQAT BHARI SHAAM GALLERY



SHAFQAT BHARI SHAAM GALLERY





WELFARE



WELFARE INITIATIVES

Kiran Foundation supports underserved communities across Pakistan through targeted welfare interventions focused on access to clean water, construction of Masjids, healthcare support, emergency relief, and rehabilitation. This year, our work reached communities in Balochistan, Gilgit-Baltistan, and Karachi, benefiting thousands of individuals.

BALOCHISTAN WELFARE (District Panjgur, KECH & Washuk)

17
WATER PROJECTS
IN PANJGUR & WASHUK

Impact: Provided safe drinking water to 6,000–8,000 people



WATER
PROJECTS

64

SINCE 2021

5
MASJIDS
CONSTRUCTED
IN PANJGUR & WASHUK

Facilities: Solar power, water and Wudu areas, speaker systems, prayer mats, basic infrastructure
Impact: Benefited 400–500 families.



MOSQUES

7

2024

KECH
THALASSEMIA CARE
CENTER SUPPORT

- Supplied blood bags, cannulas, syringes, CBC tubes, and test kits

Impact: Ensured 450+ children received free monthly transfusions since 2021.

WINTER RELIEF
DRIVE

- 500 families supported across Panjgur, Washuk, and Kech
- Distributed: ration packs, blankets, jackets, shoes, socks, warm caps, floor mats, mosquito nets, and toys



GILGIT-BALTISTAN WELFARE

District Ghizer (Thalidas, Daen, Asumber)

FLOOD RELIEF
SUPPORT FOR
300 FAMILIES

- **Distributed:** ration packs, blankets, winter clothing, and hygiene kits
- **Delivered with support from Kiran School Barjungle (KSBJ) volunteers**



REHABILITATION SUPPORT

Lyari, Karachi

REHABILITATION
SUPPORT FOR
22
SURVIVOR FAMILIES

- **22 survivor families from Lyari building collapse rehabilitated with furnished homes, rent support, and groceries**



COMMUNITY ACKNOWLEDGEMENTS

Serving across a wide array of diverse multiethnic communities across multiple provinces, cities and villages in Pakistan it is certain that Kiran Foundation would not be a trusted anchor without its Mohsineen and team.

To our community members,

مجھے آپکا احساس ہے

Kiran is witness to your warmth, strength and resilience. Our core values, mission, and support are defined by these characteristics inspired by you. Kiran is from you. Your unwavering dignity, patience and deep commitment to building brighter futures for your children is remarkable. We are humbled and honoured to walk alongside you. You are the voice.

Dear Mohsineen,

Our collaborative trust and partnership remain fundamental to every initiative. The progress documented in this report across education, mental health, caregiver-focused, and community development programs reflects the triad's courage, belief, and faith in each other's efforts towards collective community upliftment. You are the voice amplifying this mission/vision.

To our Team,

Our sincerest gratitude to the Kiran family, your generosity, continued support and everyday efforts give life to this work each day. You are the voice shaping this mission/vision.

Together, we remain steadfast in strengthening long-term relationships, fostering mutual trust, and advancing meaningful change across all the regions we are privileged to serve.

PARTNERSHIPS



MOUS 2024 - 2025



MOU SIGNING



Kiran Foundation Collaborates with **Ribat** and **Harmony Resolution Center** to **Empower Community!**



MOU SIGNING



Kiran Foundation Collaborates with **Khudi** to Celebrate and **Empower Mothers!**

MOU SIGNING



Kiran Foundation Fully Adopted Kurumbar Valley School Barjungle to **Empower Community!**

MOU SIGNING



Kiran Foundation Collaborates with **Kiva School** to bridge the gap and offer students enriching experiences and opportunities for holistic education

MOU SIGNING



Kiran Foundation Collaborates with **BARD Foundation** to bridge the gap and offer students enriching experiences and opportunities for holistic education.

MOUS 2024 - 2025

MOU SIGNING



Kiran Foundation Collaborates with **Bulk Management** to support the journey of budding entrepreneurs from the "Beyond the School" Khudmukhtar Club.

Our supporting partners! 

www.kiranfoundation.org

MOU SIGNING



Kiran Foundation Collaborates with **Destination Imagination Pakistan** to empower youth through STEM by enabling students to represent their community at competitions.

www.kiranfoundation.org

MOU SIGNING



Kiran Foundation Collaborates with **Dynamic Communications**

To equip our teachers and facilitators with tools for **emotional growth, self-awareness, resilience,** and professional coaching.

www.kiranfoundation.org

MOU SIGNING



Kiran Foundation Collaborates with **TriFit**

Supporting Kiran Foundation's mission to create new opportunities in **education, community welfare,** and **holistic development.**

www.kiranfoundation.org

MOU SIGNING



Kiran Foundation Collaborates with **Mehfooz wellbeing** Partnering to nurture emotional wellbeing and mental wellness for our community.

www.kiranfoundation.org



LET'S GET IN TOUCH!

Lets join hands and resources to empower and uplift underserved communities through education, wellbeing and love.

Join Kiran Foundation in their mission to ensure that no child or parent gets less than what they deserve, merely due to a lack of opportunity. It is our shared responsibility to commit to equality, equity, and justice in schools, workplaces, and society as we advance towards a better Pakistan and shared global values.



Published by
Kiran Foundation

Website
www.kiranfoundation.org

All rights reserved

CONTACT US

 +92335 9366395  info@kiranschool.com

 www.kiranfoundation.org

 Shah Abdul Latif Bhattai Road, Nawabad, Lyari, Karachi, 75660



DONATE NOW 

ZAKAT

MEEZAN BANK

TITLE: KIRAN FOUNDATION (ZAKAT)

A/C NO: 0154 0101419872

IBAN: PK42 MEZN 0001 5401 0141 9872

NON-ZAKAT

MEEZAN BANK

TITLE: KIRAN FOUNDATION (FLAGSHIP)

A/C NO: 0154 0102112535

IBAN: PK32 MEZN 0001 5401 0211 2535

BANK ISLAMI

TITLE: KIRAN FOUNDATION

A/C NO: 1088 00026660001

IBAN: PK51 BKIP 0108 8000 2666 0001

KIRAN FOUNDATION – US

422 HARRISON DRIVE, HOCKESSIN,

DE 19707, PNC BANK CHECKING ACCOUNT 5695049988

ROUTING NUMBER 031100089

ZELLE® NUMBER 3026901673 (KIRAN FOUNDATION – US)

info@kiranschool.com   [kiranfoundationofficial](#)

[kiranfoundationofficial](#)   [kiranfoundation](#)

Address

Shah Abdul Latif Bhitai Road, Nawabad, Block A, Street No. 10, UC-3, Lyari Town, Karachi, Pakistan, 75660

INDEPENDENT AUDITORS' REPORT TO THE BOARD OF KIRAN FOUNDATION

Opinion

We have audited the financial statements of KIRAN FOUNDATION ("the Society") which comprise the Statement of financial position as at June 30, 2025, the statement of income and expenditure, the statement of comprehensive income, the statement of changes in accumulated fund and statement of cash flows for the year then ended, and notes to the financial statements, including a summary of significant accounting policies.

In our opinion, the accompanying financial statements give a true and fair view of the financial position of the Society as at June 30, 2025 and of its financial performance and its cash flows for the year then ended in accordance with accounting and reporting standards as applicable in Pakistan.

Basis of opinion

We conducted our audit in accordance with International Standards on Auditing (ISAs) as applicable in Pakistan. Our responsibilities under those standards are further described in the Auditor's Responsibilities for the Audit of the Financial Statements section of our report. We are independent of the Society in accordance with International Ethics Standards Board for Accountants' Code of Ethics for Professional Accountants as adopted by the Institute of Chartered Accountants of Pakistan (the Code), and we have fulfilled our ethical responsibilities in accordance with the Code. We believe that the audit evidence we have obtained is sufficient and appropriate to provide basis for our opinion.

Responsibilities of Management and Governing Board for the Financial Statements

The management of the Society is responsible for the preparation and fair presentation of the financial statements in accordance with the approved accounting and reporting standards as applicable in Pakistan and for such internal control as the management determine is necessary to enable the preparation of financial statements that are free from material misstatement, whether due to fraud or error.

In preparing the financial statements, management of the Society is responsible for assessing the Society's ability to continue as a going concern, disclosing, as applicable, matters related to going concern and using the going concern basis of accounting unless management either intends to liquidate the Society or to cease operations, or has no realistic alternative but to do so.

The board are responsible for overseeing the Society's financial reporting process.

Auditor's Responsibilities for the Audit of the Financial Statements

Our objectives are to obtain reasonable assurance about whether the financial statements as a whole are free from material misstatement, whether due to fraud or error, and to issue an auditor's report that includes our opinion. Reasonable assurance is a high level of assurance, but is not a guarantee that an audit conducted in accordance with ISAs as applicable in Pakistan will always detect a material misstatement when it exists. Misstatements can arise from fraud or error and are considered material if, individually or in the aggregate, they could reasonably be expected to influence the economic decisions of users taken on the basis of these financial statements.

As part of an audit in accordance with ISAs as applicable in Pakistan, we exercise professional judgment and maintain professional skepticism throughout the audit. We also:

- Identify and assess the risks of material misstatement of the financial statements, whether due to fraud or error, design and perform audit procedures responsive to those risks, and obtain audit evidence that is sufficient and appropriate to provide a basis for our opinion. The risk of not detecting a material misstatement resulting from fraud is higher than for one resulting from error, as fraud may involve collusion, forgery, intentional omissions, misrepresentations, or the override of internal control.
- Obtain an understanding of internal control relevant to the audit in order to design audit procedures that are appropriate in the circumstances, but not for the purpose of expressing an opinion on the effectiveness of the Society's internal control.
- Evaluate the appropriateness of accounting policies used and the reasonableness of accounting estimates and related disclosures made by management.
- Conclude on the appropriateness of management's use of the going concern basis of accounting and, based on the audit evidence obtained, whether a material uncertainty exists related to events or conditions that may cast significant doubt on the Society's ability to continue as a going concern. If we conclude that a material uncertainty exists, we are required to draw attention in our auditor's report to the related disclosures in the financial statements or, if such disclosures are inadequate, to modify our opinion. Our conclusions are based on the audit evidence obtained up to the date of our auditor's report. However, future events or conditions may cause the Society to cease to continue as a going concern.
- Evaluate the overall presentation, structure and content of the financial statements, including the disclosures, and whether the financial statements represent the underlying transactions and events in a manner that achieves fair presentation.

We communicate with the Board regarding, among other matters, the planned scope and timing of the audit and significant audit findings, including any significant deficiencies in internal control that we identify during our audit.

The engagement partner on the audit resulting in this independent auditor's report is Zulfikar Ali Causer.

KARACHI

DATED: 16 DEC 2025

UDIN: AR202510067OfprhsEe3



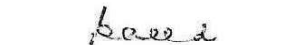
BDO EBRAHIM & CO.
CHARTERED ACCOUNTANTS

**KIRAN FOUNDATION
STATEMENT OF FINANCIAL POSITION
AS AT JUNE 30, 2025**

	Note	2025 Rupees	2024 Rupees
ASSETS			
NON CURRENT ASSETS			
Property and equipment	4	107,503,700	74,838,181
Long term deposits	5	3,976,823	1,506,653
Long term investments	6	357,040	18,939,204
		<u>111,837,563</u>	<u>95,284,038</u>
CURRENT ASSETS			
Short term investments	7	649,883,291	350,000,000
Loans and advances	8	1,225,742	3,314,562
Prepayments	9	554,090	588,830
Other receivable	10	3,154,634	33,274,773
Short-term advance	11	22,000,000	-
Advance tax		8,278,168	7,640,471
Cash and bank balances	12	18,670,934	106,940,717
		<u>703,766,859</u>	<u>501,759,353</u>
TOTAL ASSETS		<u><u>815,604,422</u></u>	<u><u>597,043,391</u></u>
LIABILITIES			
NON CURRENT LIABILITIES			
Deferred capital grant	13	27,874,168	35,541,147
CURRENT LIABILITIES			
Accrued liabilities	14	742,938	736,529
TOTAL LIABILITIES		<u>28,617,106</u>	<u>36,277,676</u>
NET ASSETS		<u><u>786,987,316</u></u>	<u><u>560,765,715</u></u>
REPRESENTED BY:			
General reserves		96,783,254	288,121,204
Restricted fund		689,967,410	268,278,710
Fair value reserve on available-for-sale investments		236,652	4,365,801
		<u>786,987,316</u>	<u>560,765,715</u>
CONTINGENCIES AND COMMITMENTS	15		

The annexed notes from 1 to 33 form an integral part of these financial statements.


CHAIRPERSON


GENERAL SECRETARY


FINANCE SECRETARY

KIRAN FOUNDATION
STATEMENT OF INCOME AND EXPENDITURE
FOR THE YEAR ENDED JUNE 30, 2025

	Note	2025 Rupees	2024 Rupees
General reserves			
Donation	16	124,643,873	135,322,790
Administrative expenses	17	(25,770,281)	(26,356,212)
Program expenses	28	(126,435,897)	(117,924,029)
Gross deficit		(27,562,305)	(8,957,451)
Restricted funds			
Income against Alumni fund	18	8,875,054	12,886,382
Alumni specific program expenses	19	(8,875,054)	(12,886,382)
		-	-
Income against DCTO School fund	20	105,943,145	65,431,408
DCTO School specific expenses	21	(105,943,145)	(65,431,408)
		-	-
Income against Alamabad fund		9,023,541	1,206,650
Kiran School Alamabad specific expense	22	(9,023,541)	(1,206,650)
		-	-
Income against Kiran School Kati Pahari fund		12,394,336	9,018,669
Kiran School Kati Pahari specific expense	23	(12,394,336)	(9,018,669)
		-	-
Income transferred from Accommodation fund		7,502,040	-
Accommodation specific expenses	24	(7,502,040)	-
		-	-
Income against Mulaika project		575,000	-
Mulaika project specific expense		(575,000)	-
		-	-
Income against Uraan fund		13,014,657	17,663,752
Uraan specific expense	25	(13,014,657)	(17,663,752)
		-	-
Income against UNODC fund		8,103,031	-
UNODC specific expense	26	(8,103,031)	-
		-	-
Other expense		-	(1,045,682)
Other income	27	70,788,325	56,891,608
Surplus for the year		43,226,020	46,888,475

The annexed notes from 1 to 33 form an integral part of these financial statements.


CHAIRPERSON


GENERAL SECRETARY


FINANCE SECRETARY

**KIRAN FOUNDATION
STATEMENT OF CASH FLOWS
FOR THE YEAR ENDED JUNE 30, 2025**

	2025 Rupees	2024 Rupees
CASH FLOWS FROM OPERATING ACTIVITIES		
Surplus for the year	43,226,020	46,888,475
Adjustments for non cash and other items:		
Depreciation	20,191,878	18,592,729
(Gain) / loss on disposal	(583,013)	1,045,682
Dividend income	(992,097)	(2,156,000)
Realised gain on investment	(6,145,145)	(6,460,330)
Amortization of deferred capital grant	(7,666,979)	(7,666,979)
Profit on investments	(63,068,070)	(48,275,278)
	<u>(58,263,426)</u>	<u>(44,920,176)</u>
Decrease / (increase) in current assets		
Loans and advances	2,088,820	(1,971,300)
Other receivable	30,120,139	100,000
Short term prepayments	34,740	(522,833)
Short term advance	(22,000,000)	-
	<u>10,243,699</u>	<u>(2,394,133)</u>
(Decrease) / increase in current liabilities		
Accrued expenses	6,409	516,529
Net cash generated from operations	<u>(4,787,298)</u>	<u>90,695</u>
Long term security deposits	(2,470,170)	(311,326)
Taxes paid	(637,697)	(1,559,287)
Net cash flows (used in) / generated from operating activities	<u>(7,895,165)</u>	<u>(1,779,918)</u>
CASH FLOWS FROM INVESTING ACTIVITIES		
Additions to property and equipment - net	(25,467,384)	(15,881,252)
Additions to capital work in progress	(26,807,000)	(7,667,961)
Sale proceeds from disposal of long term investment	20,598,160	66,135,128
Short term investments	(299,883,291)	(196,000,000)
Dividend received	992,097	2,156,000
Profit received	63,068,070	44,000,505
Net cash (used) in investing activities	<u>(267,499,348)</u>	<u>(107,257,580)</u>
CASH FLOWS FROM FINANCING ACTIVITIES		
Alumni fund received - net	3,585,868	37,206,494
Endowment fund received during the year	2,250,000	-
Alamabad fund (utilised) / received - net	(808,415)	12,976,350
Accommodation fund received - net	28,557,960	-
DCTO School fund (utilised) - net	(40,276,166)	(6,963,419)
Kiran School Kati Pahari fund received - net	181,777	41,618,219
Mulaika Project received - net	40,782,592	-
Mother and Child program received	53,571,950	-
Uraan fund received - net	91,209,197	12,625,898
UNODC received - net	8,069,966	-
Capital grant received	-	20,000,000
Net cash generated financing activities	<u>187,124,729</u>	<u>117,463,542</u>
Net (decrease) / increase in cash and cash equivalents	<u>(88,269,784)</u>	<u>8,426,044</u>
Cash and cash equivalents at beginning of the year	106,940,717	98,514,673
Cash and cash equivalents at end of the year	<u>18,670,934</u>	<u>106,940,717</u>

The annexed notes from 1 to 33 form an integral part of these financial statements.


CHAIRPERSON


GENERAL SECRETARY


FINANCE SECRETARY

KIRAN FOUNDATION
NOTES TO THE FINANCIAL STATEMENTS
FOR THE YEAR ENDED JUNE 30, 2025

1 NATURE AND STATUS OF BUSINESS

- 1.1 Kiran Foundation ("the Society") was registered on June 19, 2014 under the Societies Registration Act, XXI of 1860. The principal activities of the society are focused on empowering underserved communities through both formal and informal educational initiatives. Additionally, the society is committed to promoting the social and economic well-being of individuals within these communities.

The registered office of the society is situated at Street 10, Shah Abdul Latif Bhattai Road, Block A, Nayabad, Lyari Town, Karachi.

- 1.2 **Following are the detail of the key projects / programs of society**

Kiran Flagship – Lyari (Bridging the Gap)

The flagship initiative, launched in 2006, prepares toddlers and their mothers for mainstream schooling. It laid the foundation for the Trauma-Informed Mother and Child Kiran School System, originally introduced as the Ibtadari model. The Nafeesa Forum, a mothers' support program, runs parallel to ensure both children and caregivers thrive in a nurturing environment.

Kiran School System (KSS) 1 - DCTO Lyari (A Safe and Happy School)

Expanding the Ibtadari Model, KSS-1 provides education from preschool to 10th grade at the DCTO Government Campus in Lyari. Currently, it serves 768 students under the Trauma-Informed Mother and Child Schooling System.

Kiran School System (KSS) 2 - Kati Phari (A Safe and Happy School)

This campus follows the KSS model, offering education starting from preschool and adding a new grade each year. It serves children from diverse communities.

Kiran School System (KSS) 3 - Alamabad, Swabi (KPK) (A Safe and Happy School)

Kiran School Ibtadari in Alamabad has recently opened and it is the preschool model of Kiran School System which is a mother and child trauma informed school system. The campus situated inside Alamabad Education Complex is accommodating 60 toddlers and their caregivers.

Uraan College Support Program (Bridging the Gap)

URAAN supports youth from Lyari and other parts of Pakistan, helping Matric/O-Level and Intermediate/A-Level graduates pursue higher education and career opportunities.

Mental Health and Well-Being

Mental health is central to all Kiran Foundation's education programs. Through professional expertise, we provide training in positive parenting, self-regulation skills, and coping mechanisms to help communities manage day-to-day stressors.

Roshni - Salma Ghar Lyari (Awareness Empowers Women)

Roshni program offers a safe space for women, focusing on non-formal education and empowerment. It helps women become emotionally, socially, and financially independent. Operating from Salma Ghar, a sanctuary honouring a mother's devotion, the program provides a nurturing and supportive environment for women to thrive.

BTS (Beyond the School)

Through Hadia Clubs, this initiative provides children opportunities to discover their talents and cultivate their strengths. The program includes activities and clubs designed to engage children in positive, enriching experiences, steering them away from negative influences both online and offline.

Dosti project (A Helping Hand)

Dosti collaborates with local social entrepreneurs and community-based organizations to improve educational initiatives in underserved areas. It has positively impacted schools in Lyari, Machar Colony, Moach Goth, and Ghizer, Gilgit-Baltistan, promoting community-driven educational growth.

MOTHER AND CHILD PROGRAM

We believe in the central role a mother plays in the life of a child. At Kiran School System, we educate, empower, and support mothers in a way that they become the biggest role model in their child's life. Mothers and primary caregivers are considered equal partners in the learning and teaching process for children all the way to Matric.

During the KSS foundation years, we encourage mothers to come thrice a week for continuing their own learning process along with their child. Our training ranges from basic literacy, ESL, self-grooming, positive parenting, awareness on mental health and self-care.

MULAIKA PROJECT

Mulaika Project will be a Mother-and-Child, Trauma-Informed Preschool, designed to bridge the social and economic divides within our society through high-quality education rooted in empathy, healing, and equity. It will bring together children from diverse backgrounds in a nurturing and inclusive environment. With a strong focus on early childhood development, mental health, and emotional well-being, every aspect of the curriculum will be thoughtfully designed to foster resilience and prepare children for mainstream education.

Welfare Support

Kiran Foundation extends its welfare outreach across Pakistan, empowering underserved communities with comprehensive support services:

- Educational Support: Providing school supplies and learning Materials to children in remote areas, ensuring access to quality education despite geographical challenges.
- Community Development: Collaborating with local leaders and organizations to address socioeconomic challenges and create sustainable solutions for long-term community well-being.

2 BASIS OF PREPARATION

2.1 Statement of compliance

These financial statements have been prepared in accordance with the accounting and reporting standards as applicable in Pakistan. The accounting and reporting standards applicable in Pakistan comprise of:

- International Financial Reporting Standards for Small and Medium Sized Entities (IFRS for SMEs) issued by the International Accounting Standard Board (IASB); and
- Accounting Standard for Not for Profit Organizations (NPOs) issued by the Institute of Chartered Accountants of Pakistan (ICAP).

2.2 Basis of measurement

These financial statements have been prepared under historical cost convention unless stated otherwise.

2.3 Functional and presentation currency

These financial statements have been presented in Pakistani ('Rupees' of Rs'), which is the functional and presentation currency.

3 SUMMARY OF SIGNIFICANT ACCOUNTING POLICIES

The significant accounting policies applied in the presentation of these financial statements are set out below. These policies have been consistently applied to all the periods presented, unless stated otherwise.

3.1 Property and equipment

These are stated at cost less accumulated depreciation and impairment losses (if any).

Depreciation is charged to income applying the straight-line method at the rates stated in the relevant notes to the financial statements. Depreciation is charged on a pro-rata basis from the month the asset is available for use, up to the month preceding its disposal. Profit or loss on disposal of assets is included in the statement of income and expenditure in the year in which the asset is disposed of.

Maintenance and normal repairs are charged to expense as and when incurred while cost of major replacements and improvements, if any, are capitalized.

Capital work in progress is stated at cost less impairment loss (if any) and consist of expenditure incurred and advance made in the course of an asset.

3.2 Cash and cash equivalent

Cash and cash equivalent include cash in hand and bank balances.

3.3 Financial instruments

A financial instrument is any contract that gives rise to a financial asset of one entity and a financial liability or equity instrument of another entity.

The Society classifies its financial assets in the following categories: at fair value through profit and loss, held to maturity, and available-for-sale. The classification depends on the purpose for which the financial assets were acquired. Management determines the classification of its financial assets at initial recognition. Any gains or losses on derecognition of the financial assets and financial liabilities are taken to the statement of profit or loss account currently.

3.3.1 Financial assets

a) Available for sale

Available for sale financial assets are those non-derivative financial assets that are designated as available for sale or are not classified as fair value through profit or loss.

b) **Held to maturity**

Held to maturity investments are financial assets with fixed or determinable payments and fixed maturity that the Society has a positive intent and ability to hold to maturity.

c) **Fair value through profit or loss**

A non-derivative financial asset is classified at fair value through profit or loss if it is held for trading or is designated as such upon initial recognition. Investments are designated at fair value through profit or loss if the Society manages such investments and makes purchase and sale decisions based on recognized in the statement of income and expenditure when incurred. their fair value. Upon initial recognition, attributable transaction costs are recognised in statement of income and expenditure when incurred.

Investments at fair value through profit or loss are measured at fair value and changes therein are recognized in statement of income and expenditure.

3.3.2 Offsetting of financial assets and financial liabilities

Financial asset and a financial liability is offset and the net amount is reported in the statement of financial position if the Society has legally enforceable right to setoff the recognized amount and intend either to settle on a net basis or to realize the asset and settle the liability simultaneously.

3.3.3 Financial liabilities

All financial liabilities are recognized at the time when the society becomes a party to the contractual provisions of the instrument. Financial liabilities are recognized initially at fair value less any directly attributable transaction cost. Subsequently to initial recognition, these are measured at amortized cost using the effective interest rate method.

3.3.4 Impairment of financial assets

At each reporting date, the Society reviews the carrying amounts of its non-financial assets at each reporting date to identify circumstances indicating occurrence of impairment loss or reversal of previous impairment losses. An impairment loss is recognized in the statement of profit or loss for the amount by which the asset's carrying amount exceeds its recoverable amount. The recoverable amount is the higher of an asset's fair value less cost to sale and value in use. Reversal of impairment loss is restricted to the original cost of the asset.

3.3.5 Derecognition

Financial assets are derecognized when the rights to receive cash flows from the financial assets have expired or have been transferred and the society has transferred substantially all risks and rewards of ownership attached to such financial assets. Gains and losses on disposal are determined by comparing the proceeds with the carrying amount and are recognized in the statement of income and expenditure.

3.4 Taxation

The charge for current taxation is based on taxable income at the current rate of taxation after taking into account applicable tax credits, rebates and exemptions available, if any. However, for income covered under the final tax regime, taxation is based on applicable tax rates under such regime. The Society intends to claim a tax credit equal to one hundred per cent of the tax payable under section 100C of the Income Tax Ordinance, 2001, including minimum tax and final taxes payable. Therefore, no provision for taxation has been recorded in these financial statements.

3.5 Government grants

A grant without specified future performance conditions is recognized in income when the grant proceeds are receivable. A grant that imposes specified future performance conditions is recognized in income when all those conditions are met and there is a reasonable assurance that the grant will be received.

3.6 Deferred capital grant

Grants related to property and equipment are accounted for by setting up the grants as deferred grants. These grants are recognized as income systematically over the useful life of the related property and equipment, in alignment with the depreciation charged on the capitalized asset against the deferred capital grant.

3.7 Trade and other payables

Liabilities for trade and other payables are carried at cost which is the fair value of the consideration to be paid in the future for goods and services received, whether or not billed to the Society.

3.8 Income recognition

Donations are recognized as income as and when received. Donations received in kind are recognized at the fair value prevailing at the time of receipt of such donation. Grants and donations received for revenue expenditure are taken to the statement of income and expenditure.

Markup on bank deposits and return on short term investments are recognised on accrual basis

Dividend income is recognised when the Society's right to receive dividends is established.

3.9 Restricted funds

Restricted funds refer to financial resources that are designated by donors for specific projects within the Society. Restricted contributions are recognized as income in the statement of income and expenditure on a systematic basis in the same period in which the related expenditure is incurred. Fund balances can be internally or externally restricted.

3.10 Significant accounting estimates, judgements and assumptions

The preparation of financial statements in conformity with accounting and reporting standards requires management to make estimates, assumptions and use judgements that affect the application of the Society's accounting policies and the reported amounts of assets, liabilities, income and expenses. The estimates and assumptions are based on historical experience and various other factors that are believed to be reasonable under the circumstances, the results of which form the basis of making judgements about the carrying values of assets and liabilities that are not readily apparent from other sources. Actual results may differ from these estimates. The estimates and underlying assumptions are reviewed on an ongoing basis. Revisions to accounting estimates are recognized in the year in which the estimate is revised if the revision affects only that year, or in the year of the revision and future years if the revision affects both current and future years.

Judgements made by the management in the application of accounting and reporting standards, as applicable in Pakistan, that have significant effect on these financial statements are described in the following notes:

- Property and equipment (notes 3.1)
- Impairment of financial assets (note 3.3.4)
- Taxation (note 3.4)